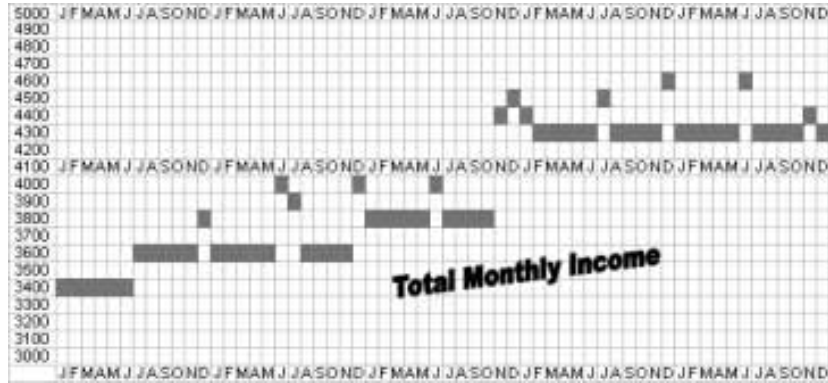

Graphs from Chapter 13 of 'No Balance Due'

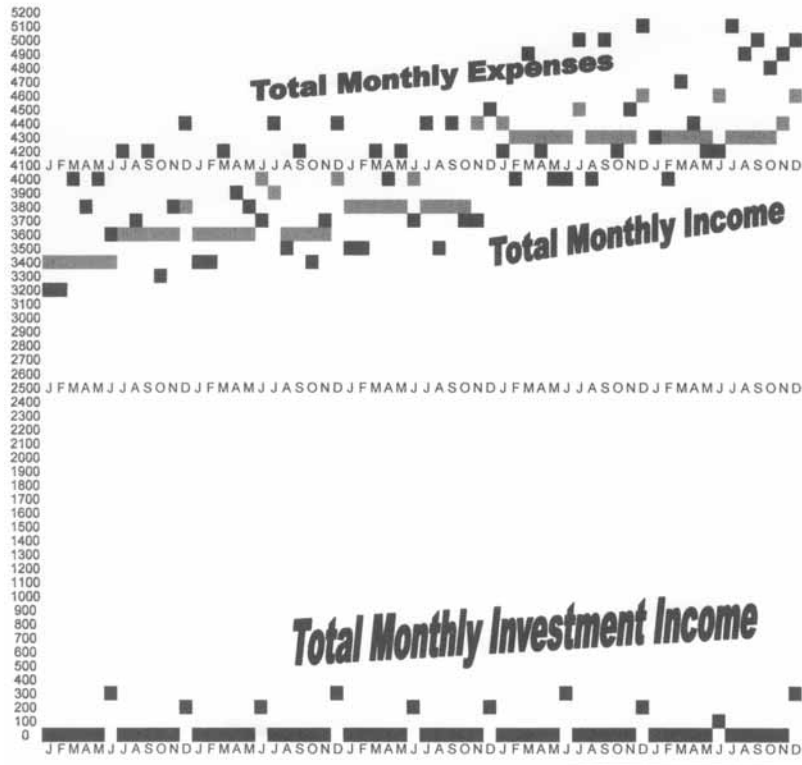
This is a simple five year graph of income.



This one shows this same families expenses for five years.



This is the same information placed on one graph. Notice how the expenses are much higher than the income. This is due to the availability of easy credit in our society.



As explained in 'No Balance Due', this graph shows how the typical household is able to get what they want and *get it now*.

